



Affording Peace of Mind Is Easy with EMC Security

Central Georgia EMC (CGEMC) has partnered with EMC Security to provide our members with low-cost, no-contract, security monitoring services. EMC Security has been in business since 1998 and currently monitors more than 50,000 homes and businesses in Georgia. Their success is built on providing high-quality service and value to their customers.

Reasons to consider a home security system with EMC Security:

- Free security consultation.
- There is never a contract to sign.
- You own the security system at the time of installation.
- Affordable monitoring rates, beginning at \$16.95 for home service.
- EMC Security can monitor most existing security systems.
- By installing a security system in your home, you may qualify for a reduction on your homeowner's insurance.
- EMC Security monitoring does not require a landline.



When you schedule a free consultation, EMC Security's representatives will evaluate your security needs and help develop a custom plan designed to keep your home or business secure. Using the most advanced technology, they can offer additional services, such as a medical alert system, remote system control, home automation, and video monitoring that help protect your life, property, and peace of mind.

Because each system is custom designed for your individual needs, you get precisely the level of protection you expect. For more information on EMC Security, contact CGEMC's office at 770-775-7857 or EMC Security at 770-963-0305.

CENTRAL GEORGIA ELECTRIC MEMBERSHIP CORPORATION ANNOUNCES ITS UNCLAIMED CAPITAL CREDIT CHECKS FOR 2015

Central Georgia EMC is a not-for-profit organization. This means any excess revenue, after covering operating costs, is returned to its members in the form of a capital credit check (based on each member's energy use).

In December 2015, Central Georgia EMC issued capital credit refund checks for half of 1996 and half of 1997. However, some of the refund checks issued were returned

by the U.S. Postal Service as "undeliverable." A list of the names of these customers can be found by visiting our website, www.cgemc.com, or by viewing the list at our office, located at 923 South Mulberry Street, Jackson, GA 30233. If you know the correct address of these individuals or have any helpful information, please contact our office or notify the member to contact us as soon as possible by calling 770-775-7857 or 1-800-222-4877.



CUSTOMERS DUE

REFUNDS

Bryson, Robert D.
Hargrove, Christopher A.
Holland, Melissa
Merritt, Patricia
MITEC, INC
Newman, Jory M.
Niblett, Dina
Nelson, Natalie
Oldfield, Howard Wesley
Ridgeway, Cynthia
Stansberry, Rebekah M. B.
Speir, Adam Isaac
Wright, Tameka
Yates, David A.



Energy Efficiency

Tip of the Month



Earth Day is April 22. Give back to the environment by planting a deciduous tree near your home. Deciduous trees lose their leaves during the fall, allowing sunlight to warm your home. The extra shade during summer months will keep your home cooler and give your air conditioner a much-needed break.

The Power of Renewable Energy—Go Green

Our Green Power initiative offers you the chance to help the environment while giving you the peace of mind that comes with that choice. With the help of Green Power EMC and the support of our members, CGEMC utilizes electricity generated from biomass—specifically, methane gas reclaimed from a Taylor County landfill, which is harnessed to create clean and sustainable energy.

Landfill gas generators use the methane produced from the natural breakdown of organic wastes at the landfill site to produce clean, renewable energy. The process also removes harmful methane from the environment.

Members who are interested in participating in alternative energy sources through the Green Power program may purchase a block (150 kilowatt-hours) of energy on a first come, first-served basis. These limited blocks are available at an additional cost of \$4.50 per month.

PRODUCT CONTENT LABEL

The product is sold in blocks of 150 kilowatt-hours (kWh). The product will be made up of the following renewable resources.

Green-e Energy Certified New ³ Renewables in Central GA EMC Green Power Program	2015 ¹		2016 ²	Generation Location
	2015 ¹	2016 ²		
Biomass	100%	100%		Georgia
Geothermal	0%	0%		
Eligible hydroelectric	0%	0%		
Sola	0%	0%		
Wind	0%	0%		
TOTAL	100%	100%		

- The 2015 figures reflect the resources that were supplied for the year ending December 31, 2015.
- The 2016 figures are prospective and reflect the power that we have contracted to provide. Actual figures may vary according to resource availability. We will annually report to you before August 1 of next year in the form of a Historic Product Content Label the actual resource mix of the electricity you purchased.
- New Renewables come from generation facilities that first began commercial operation within the past 15 years. This product includes generation from a facility that is approved for extended use by Green-e Energy.

For comparison, the current average mix of resources supplying Central Georgia EMC includes: Coal (8%), nuclear (20%), oil (0%), natural gas (69%), hydroelectric (3%), and other (0%).

The average home in the United States uses 909 kWh per month. [Source: U.S. EIA, 2013]

For specific information about this electricity product, please contact Central Georgia Electric Membership Corporation, 800 222-4877, csr@cgemc.com.

Green-e Energy certifies that Central Georgia Electric Membership Corporation Green Power Program meets the minimum environmental and consumer protection standards established by the nonprofit Center for Resource Solutions. For more information on Green-e Energy certification requirements, call 1-888-63-GREEN or log on to www.green-e.org.



Granting Access with Small Change

Last fall, Central Georgia EMC's Foundation granted Operation Round Up® funding to the Access program at Mary Persons High School in Forsyth. The Access program provides a functional, modified curriculum to students with intellectual disabilities and other disabilities including cerebral palsy, visual impairment, and autism. Thanks to Operation Round Up and our members who contribute, those students can learn domestic skills that will help them become independent adults in the community.



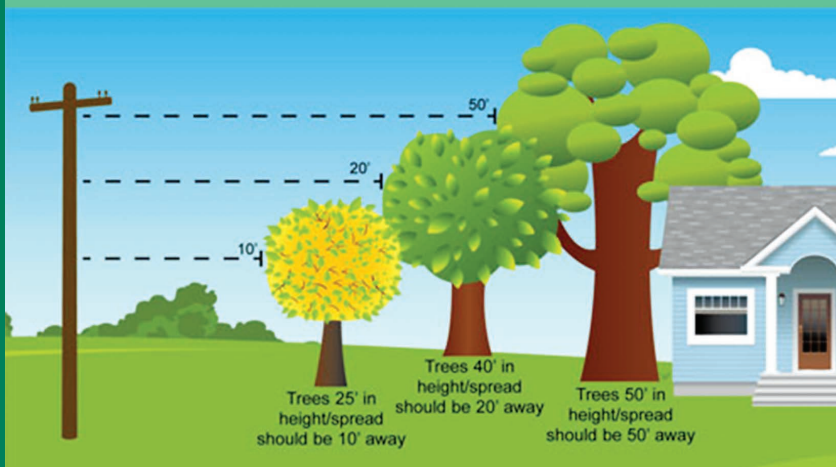
The Operation Round Up grant facilitated the purchase of new appliances for the instructional kitchen, including an electric range, washer, dryer, and microwave. The students will use these appliances to learn life skills such as cooking, housekeeping, time management, and doing laundry, while increasing their confidence and independence.



Access teacher Beth Chafin says, "The microwave in our kitchen was a minimum of 20 years old; our students had to make do with an outdated microwave that allowed zero independence. The students were thrilled about the new microwave, which they can use independently. They made burritos in the microwave without assistance and loved them!"

Through Operation Round Up, each participating Central Georgia EMC member makes a small monthly contribution by electing to have their electric bill rounded up to the next dollar. The change CGEMC members contribute is distributed by the Central Georgia EMC Foundation to qualifying charities in the CGEMC community. Together, these small amounts make a big difference.

A simple guide for safe tree planting near utility lines.
Verify tree height before planting for safety.



Recipe of the Month

Spring Break Strawberry Salad

From the kitchen of Janet Edge

Ingredients:

- 1 large package of strawberry Jell-O
- 1 (20-ounce) can crushed pineapple, undrained
- 2 cups buttermilk
- 1 (12-ounce) container of Cool Whip
- 1 cup pecans, chopped

Directions:

Heat buttermilk with Jell-O until dissolved. Do not allow to boil. Remove from heat and add crushed pineapple with juice. Place in refrigerator until partly congealed. Remove from refrigerator; add Cool Whip and nuts, beating for 3 minutes. Pour into a dish of the desired size and refrigerate.

Would you like to share a recipe?

If so, please send to 923 S. Mulberry St, Jackson, GA 30233, Attn: Vicki Jolley, or email vjolley@cgemc.com. You will receive a \$20 credit on your next electric bill for recipes that are printed. Please include your account number.

Holiday Notice

CGEMC's office will close Monday, May 30, 2016, in observance of Memorial Day. In case of a power outage, please call our 24-hour automated system at 770-775-7857 or 800-222-4877 for an immediate response. System operators are on duty to assist you. Outages may also be reported using our Central Georgia EMC Mobile App, available in the Apple App Store and from Google Play Store.



24 hours a day, 365 days a year
770-775-7857 • 1-800-222-4877

923 Mulberry Street
Jackson, GA 30233
www.cgemc.com

Report an Outage
770-775-7857
1-800-222-4877

Office Hours
8 a.m. – 5 p.m.
Monday – Friday

Closed

Saturday, Sunday and Posted Holidays

Board of Directors

- Chairman** D.T. Hamil
- Vice Chairman** Warren E. Holder
- Sec.-Treas.** D.A. Robinson, III
- J.O. Colwell
- Phillip B. Ham, Jr.
- Linda H. Jordan
- Arthur White, Jr.
- J. Everett Williams

Staff

- President / CEO**
George Weaver
- Chief Operating Officer**
John Fish
- Vice President Distribution Services**
John Harkness
- Vice President of Energy Services**
Jeff Greeson
- Vice President of Engineering Services**
Herschel Arant
- Vice President of Field Services**
Ben Thomason
- Director of Corporate Services**
Chuck Griggers
- Director of Human Resources**
Marilyn Webb
- Executive Assistant**
Rhee Ivey

Central Georgia EMC is an EOE/AA:
Minorities/Females/Disabled/Vets employer
and drug-free workplace.

News & Views is published and distributed
monthly to all members and customers of
Central Georgia EMC.

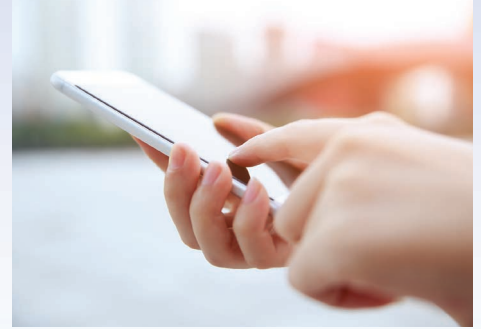
Editorial Staff

- Christy Chewning
- Victoria Jolley

One Simple Call Connects You

Our Telelink pay-by-phone service is the easiest way to connect to your account and make a payment. To access the system, call 770-775-7857 and select option 2. Commands may be spoken directly to the Interactive Voice Response (IVR) system.

With 24-hour access, you may make a payment using a check, credit, or debit card, at a time convenient for you. Payments post to your account within minutes, and you will receive a confirmation number for your records.



Earth Day Is the Perfect Time to Switch to E-Bill

No one enjoys searching through piles of paper for that one item. Mail gets lost in transit; bills are misplaced. Why not make your life a little easier and less cluttered by signing up for E-Bill this month?

When you sign up for E-Bill, your monthly electric bill will be delivered directly to your email address, reducing the travel time and paper waste of standard bills. The E-Bill contains the same information as your paper bill and is easy to print, if needed. You will also receive our monthly newsletter, *News & Views*, in digital format.

To sign up for E-Bill today, visit www.cgemc.com and follow these simple steps:

1. Log in to the Customer Portal
2. Choose My Account
3. Choose E-Notifications
4. Then click on E-Bill

If you need help setting up your E-Bill service, contact us at 770-775-7857 or csr@cgemc.com.



Summer Rates May through October

Beginning May 1, Central Georgia EMC's summer rate structure will take effect. The summer residential electric rates are:

Summer Rate (May-October)*

All kilowatt-hours (kWh) used..... \$0.08520 per kWh

**Rates do not include the Wholesale Power Cost Adjustment, which may vary each month.*