



Central Georgia EMC Introduces the Power of the Sun

If you are thinking about installing solar power; however, you do not want the high cost, maintenance, and frequent barriers associated with rooftop solar panels, consider Cooperative Solar from Central Georgia EMC (CGEMC).

CGEMC's Cooperative Solar program will allow you to choose just the right amount of solar energy from our offsite energy facility. Our Cooperative Solar subscribers will receive affordable, renewable solar energy directly from our portfolio of solar energy resources.

Our shared offsite facility in Hazlehurst, Ga., is one of the largest solar energy projects in the state, with 942 acres. The 600 acres accommodate 633,600 solar panels, leaving the remaining 340 acres for future expansion. The solar project is expected to generate more than 134 million kilowatt-hours (kWh) of clean, renewable energy annually. The energy produced will be enough to serve about 8,500 EMC households.

CGEMC will be allocated 0.5 megawatts of power from the solar facility. Our customers will have the opportunity to purchase blocks of 1kW solar energy. Each block will cost \$19 per month and will represent 1/500 of the kWh produced by CGEMC's portion of the solar facility. Here is an example:

Total electricity used at your home for the month	1,836 kWh
Estimated electricity generated by your block of solar	<u>-167 kWh</u>
You will be billed at the regular rate for	1,669 kWh

The electricity delivered to your home through the power grid is calculated, and the solar energy generated from your share of the total solar portfolio capacity will be credited back to you. We take on the risk of ownership and maintenance, while you receive your share of the energy produced without the hassle.

The monthly energy produced for each customer varies due to the position of the sun, time of year, and number of cloudy days. Therefore, you will receive different amounts of solar energy each month, based on the available sunlight and performance of the solar facility.

Pre-sales will begin August 15, 2016. Sales are on a first-come, first-served basis. No long-term commitment is required. You may leave the solar program at any time by notifying us. Once all 500 blocks are sold out, a waiting list will be available. Call our office at 770-775-7857 or email csr@cgemc.com to apply.

Advantages of Cooperative Solar with CGEMC

- Low-cost way to benefit from solar energy.
- No maintenance hassles.
- The perfect solution for renters who want to be involved with renewable energy.
- No red tape with zoning restrictions or homeowners' associations.
- Solar energy will be allocated to your electric bill on a monthly basis.
- No holes in the roof to accommodate solar equipment.
- No long-term contract or commitment.

CUSTOMERS DUE



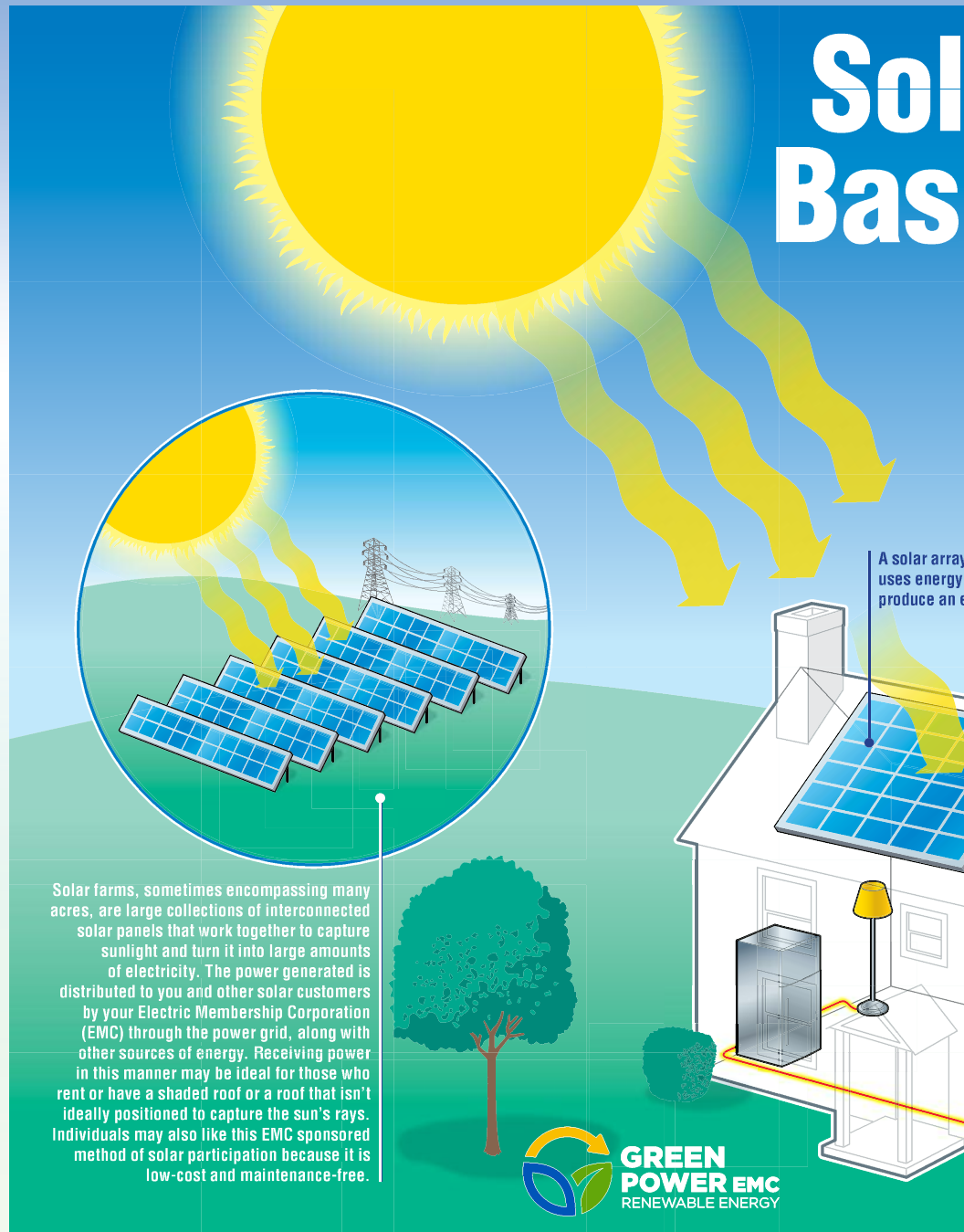
Brewster, Varina S.
Hewer, Breanne
Howard, Tobias C.
Kittle, Joshua A.
Martinez, Paul Alexander
McClendon, Nicole Lynn
Myers, Ashleigh Michelle
Washington, Jarvis M.



Energy Efficiency

Tip of the Month

Is your room air conditioner working overtime? Reduce air leaks by installing rigid foam panels (instead of the commonly used accordion panels) in between the window frame and unit, and secure with duct tape.



Solar farms, sometimes encompassing many acres, are large collections of interconnected solar panels that work together to capture sunlight and turn it into large amounts of electricity. The power generated is distributed to you and other solar customers by your Electric Membership Corporation (EMC) through the power grid, along with other sources of energy. Receiving power in this manner may be ideal for those who rent or have a shaded roof or a roof that isn't ideally positioned to capture the sun's rays. Individuals may also like this EMC sponsored method of solar participation because it is low-cost and maintenance-free.

What is solar energy?

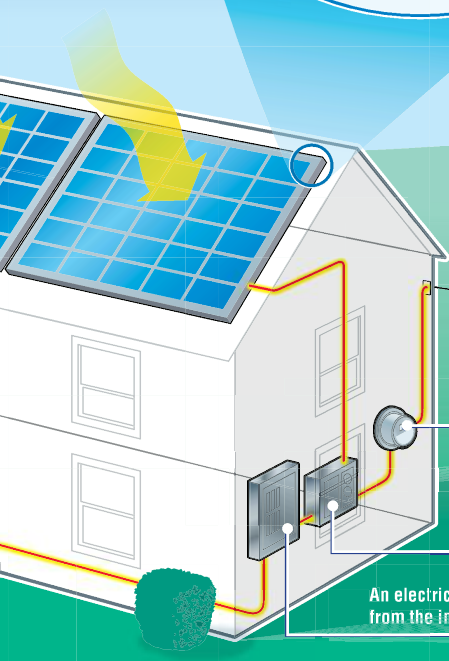
Solar energy is contained in the sun's rays that reach the Earth each day. The energy produced by sunlight can be harnessed to create electric power. Georgia ranks 10th, tied with Mississippi and South Carolina, in solar energy potential.

What are photovoltaic cells?

Photovoltaic cells are the most common method for capturing the sun's energy for conversion into electricity. They are made from materials such as silicon and convert photons from the sun's rays directly into electrons to produce an electric current. Photovoltaic cells are wired together to form a module, also known as a solar panel. Panels are linked in a circuit to form an array. The array is mounted on rooftops or in open spaces, where maximum exposure to the sun is provided.

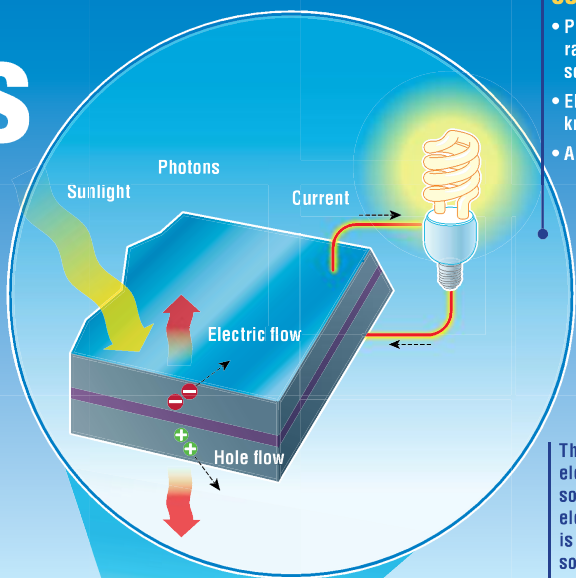
ar ics

on your roof
from the sun to
electric system.

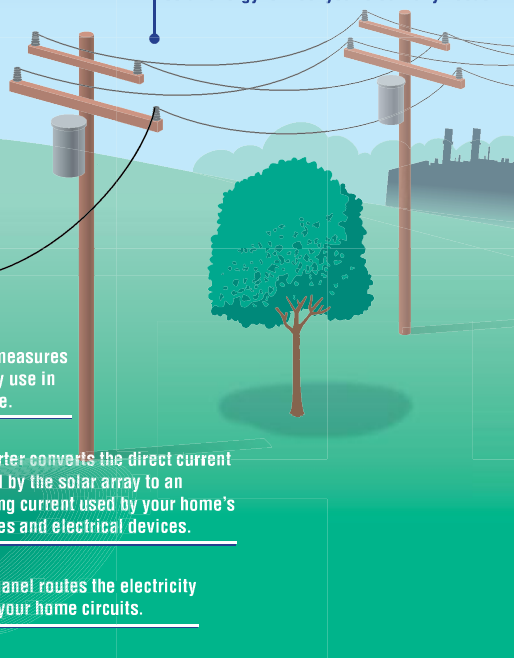


A closer look at Photovoltaic (PV) solar panels

- Photons from the sun's rays are captured by the solar panels.
- Electrons in crystals are knocked free.
- An electric current is produced.



The electric grid supplies your home with electricity from many different energy sources to ensure reliable and consistent electric service at night and when sunshine is not sufficient to produce the amount of solar energy to meet your electricity needs.



How is solar energy measured?

Solar energy is measured in kilowatt-hours (kWh). A single kWh equals the amount of electricity required to operate a 100-watt light-bulb for 10 hours.

What are the environmental considerations of solar?

Solar energy provides clean, sustainable energy that does not create pollution or emissions.

Recipe of the Month



Pig Pickin' Cake

From the kitchen of Rudene Reeves

Ingredients:

- 1 package yellow cake mix
- 2 (11-ounce) cans mandarin oranges, drained
- 1 1/2 cups chopped pecans
- 1 (3.4-ounce) package instant vanilla pudding
- 1 (15-ounce) can crushed pineapple
- 1 (16-ounce) container nondairy whipped topping

Directions:

Preheat oven to 350 degrees. Grease and flour three 8-inch cake pans. Prepare cake mix according to package directions, plus add mandarin oranges and pecans. Pour into cake pans, bake for 20-25 minutes, or until a toothpick inserted in the center of the cake comes out clean. Cool completely.

Filling:

In a large bowl, combine crushed pineapple with juice and pudding mix. Fold in the nondairy whipped topping. Spread the filling between cooled cake layers. Chill in refrigerator before serving.

Would you like to share a recipe?

If so, please send to 923 S. Mulberry St, Jackson, GA 30233, Attn: Vicki Jolley. Alternatively, submit to vjolley@cgemc.com. Please include your account number. You will receive a \$20 credit on your next electric bill for recipes that are printed.



24 hours a day, 365 days a year
770-775-7857 • 1-800-222-4877
923 Mulberry Street
Jackson, GA 30233
www.cgemc.com

Report an Outage

770-775-7857
1-800-222-4877

Office Hours

8 a.m. – 5 p.m.
Monday – Friday

Closed

Saturday, Sunday and Posted Holidays

Board of Directors

Chairman D.T. Hamil

Vice Chairman Warren E. Holder

Sec.-Treas. D.A. Robinson, III

J.O. Colwell

Phillip B. Ham, Jr.

Linda H. Jordan

Arthur White, Jr.

J. Everett Williams

Staff

President / CEO

George Weaver

Chief Operating Officer

John Fish

Vice President Distribution Services

John Harkness

Vice President of Energy Services

Jeff Greeson

Vice President of Engineering Services

Herschel Arant

Vice President of Field Services

Ben Thomason

Director of Corporate Services

Chuck Griggers

Director of Human Resources

Rhee Ivey

Executive Assistant

Tina Kitchens

Central Georgia EMC is an EOE/AA:
Minorities/Females/Disabled/Vets employer
and drug-free workplace.

News & Views is published and distributed
monthly to all members and customers of
Central Georgia EMC.

Editorial Staff

Christy Chewning
Victoria Jolley

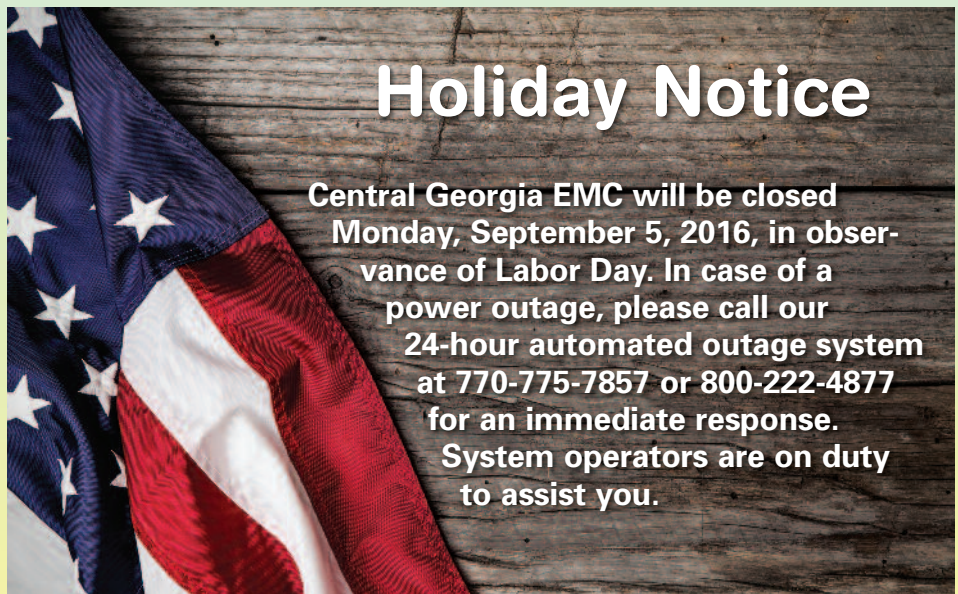
Existing Home Rebates

To help make our customers' homes more energy efficient, Central Georgia EMC offers programs and services designed to conserve electricity and save money. The following rebate programs are for existing residential homes served by Central Georgia EMC:

Measure	System Application	Rebate Amount
Air Source Heat Pump Upgrade (16 SEER or above)	Heating and Cooling	\$250
Conversion from Gas to Electric Air Source Heat Pump (16 SEER or above)	Heating and Cooling	\$350
Geothermal Heat Pump	Heating and Cooling	\$250 per ton (up to 3 tons)
ENERGY STAR Room Air Conditioner	Heating and Cooling	\$25 per system (max. 2 systems)
Heat Pump Water Heating	Water Heating	\$250
Solar Thermal Water Heater	Water Heating	\$250
Conversion from Gas to Electric Storage Water Heater (50 gallon min.)	Water Heating	\$100
Photovoltaic System	Whole Home	\$450 per kW (10 kW max.)

To download a rebate application, or for more information regarding CGEMC's rebates, visit cgemc.com/rebates/ or call us at 770-775-7857 or 800-222-4877.

All Central Georgia EMC 2016 rebates are subject to change without notice. Rebates will end on **December 23, 2016**, unless otherwise noted. Some rebates will require verification by a CGEMC Energy Services Representative.



Holiday Notice

Central Georgia EMC will be closed Monday, September 5, 2016, in observance of Labor Day. In case of a power outage, please call our 24-hour automated outage system at 770-775-7857 or 800-222-4877 for an immediate response. System operators are on duty to assist you.